

External Workspace Manager Plugin for Jenkins Pipeline

Alexandru Somai



Jenkins World

2016

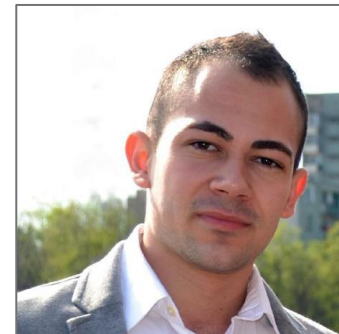
#JenkinsWorld

About myself



Jenkins World
2016

- GSoC Student at Jenkins project
- >2 years experience in Software Development
- Major in Software Engineering at Babes-Bolyai University of Cluj-Napoca, Romania



 [alexsomai](#)

 [@alex_somai](#)

 [alexsomai](#)



BABEȘ-BOLYAI UNIVERSITY
Faculty of Mathematics and Computer Science



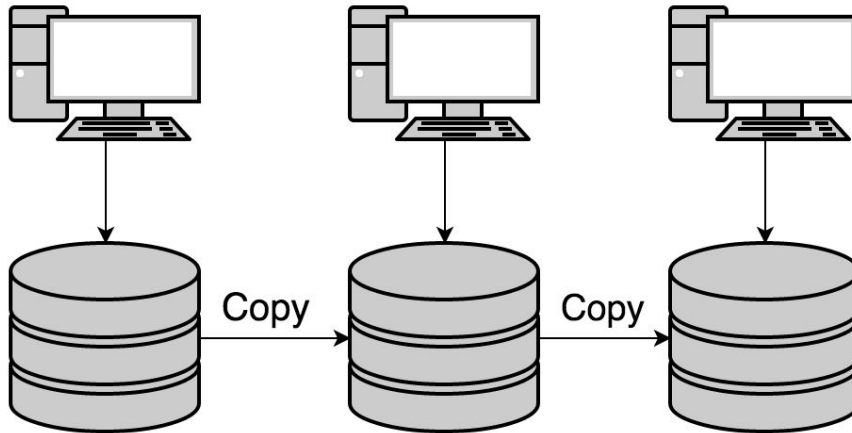
#JenkinsWorld

The problem



Jenkins World
2016

- Difficult to reuse the same workspace for multiple jobs
- e.g. Running parallel testing across nodes



#JenkinsWorld

Possible solutions



Jenkins World
2016

- Stash/unstash pre-made artifacts (single pipeline)
- Copy Artifacts plugin
- Advanced job setting
 - custom workspace (freestyle)
 - ws (pipeline)

About the project



Jenkins World
2016

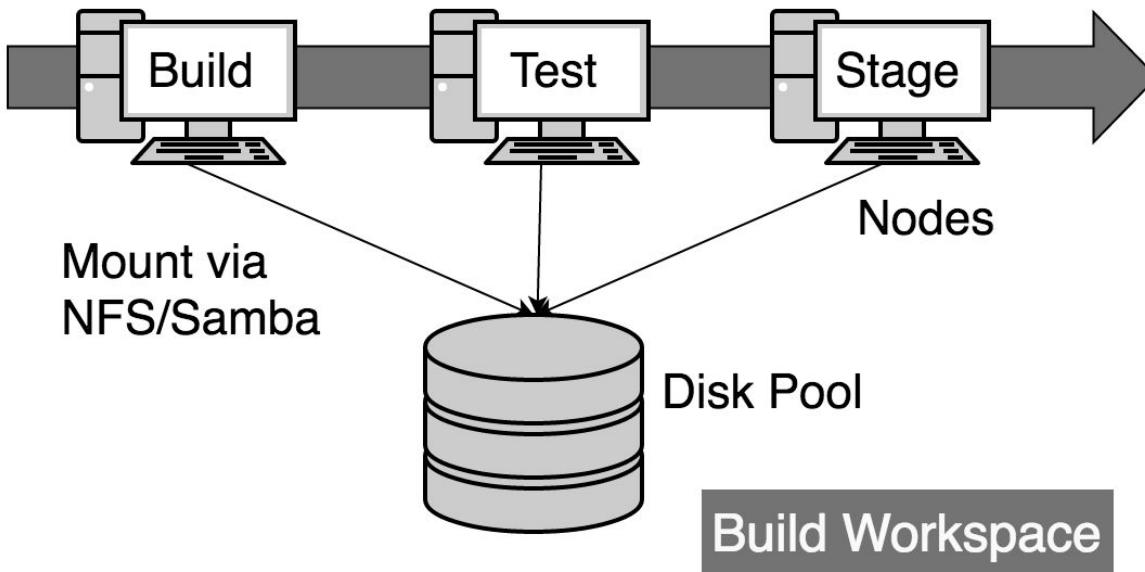
- Google Summer of Code 2016 project
 - Mentors: Oleg Nenashev & Martin d'Anjou
- Jenkins plugin
- Focus on Pipeline jobs
- Share and reuse workspaces across multiple jobs
 - No need to copy, archive or move files

Concept



Jenkins World
2016

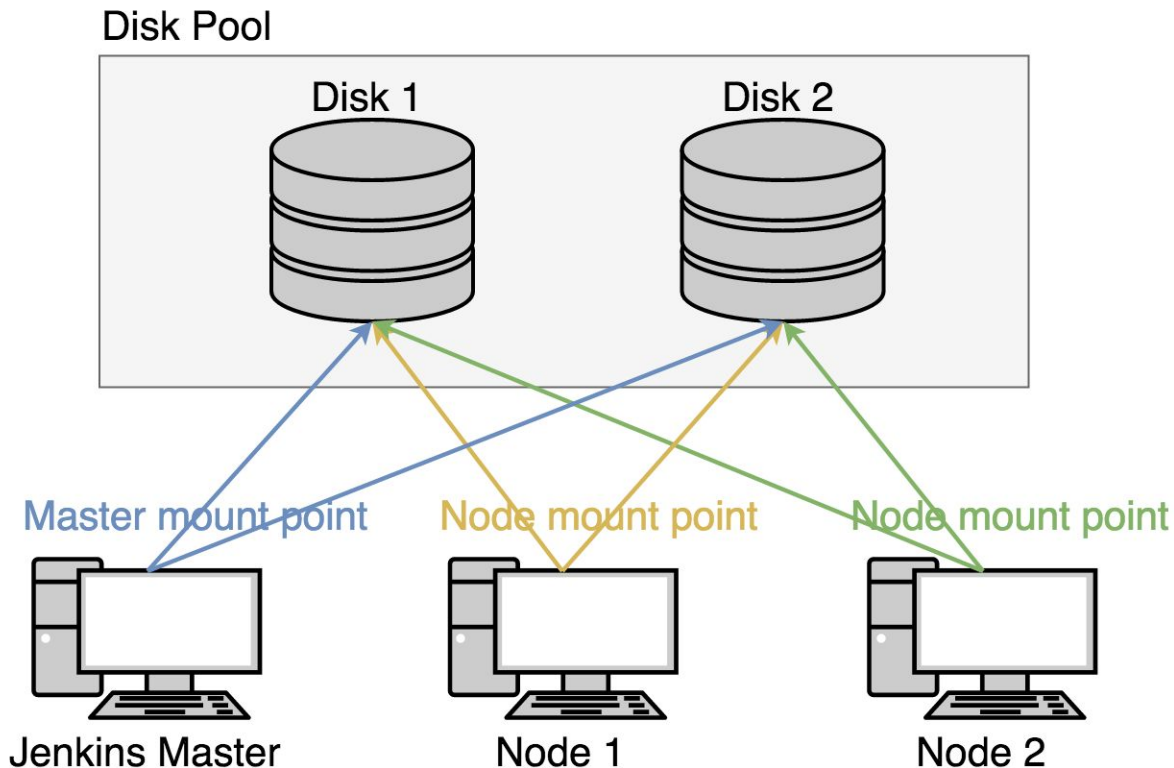
Build
Pipeline



Infrastructure



Jenkins World
2016



#JenkinsWorld

Jenkins global config

Disk Pool
Disk Pool ID: ?

Display Name: ?

Description: ?

Workspace path template:

Disk Pool Restriction: ?

Disk Allocation Strategy: ?

Disk 1

Disk
Disk ID: ?

Display Name: ?

Master mount point: ?

Physical path on disk: ?

Disk Information: ?

Delete Disk

Disk 2

Disk
Disk ID: ?

Display Name: ?

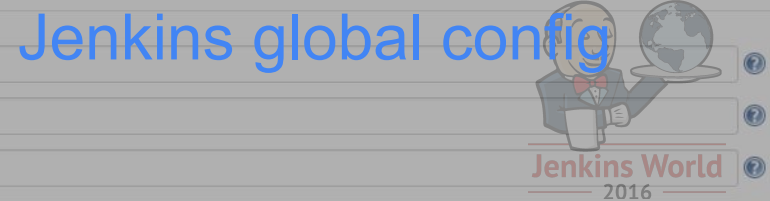
Master mount point: ?

Physical path on disk: ?

Disk Information: ?

Delete Disk

Node 1 config



Labels:

Usage:

Launch method:

Availability:

Node Properties

Environment variables

External Workspace

Disk Pool

Disk Pool Ref ID:

Disk

Disk Ref ID:

Node mount point:

Disk

Disk Ref ID:

Node mount point:

diskpool1

Display Name:

A summary description of this Disk Pool

Select the Disk with the most usable space

Disk

Disk ID:

Display Name:

Master mount point:

Physical path on disk:

Disk Information:

Disk

Disk ID:

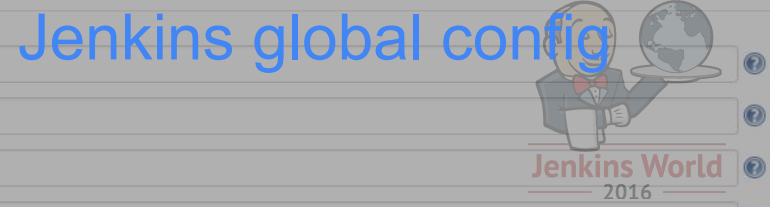
Display Name:

Master mount point:

Physical path on disk:

Disk Information:

Node 2 config



Disk Pool
 Disk Pool ID

Display Name

Labels

Usage

Launch method

Availability

Node Properties

- Environment variables
- External Workspace

Disk Pool
 Disk Pool Ref ID

Disk
 Disk Ref ID
 Node mount point

Disk
 Disk Ref ID
 Node mount point

Add Disk

diskpool1

Disk Pool One

A summary description of this Disk Pool

No restriction (take any)

Select the Disk with the most usable space

Disk
 Disk ID
 Display Name
 Master mount point
 Physical path on disk
 Disk Information

Disk
 Disk ID
 Display Name
 Master mount point
 Physical path on disk
 Disk Information

Delete Disk

#JenkinsWorld

Delete Disk

Example 1. Usage in a single job



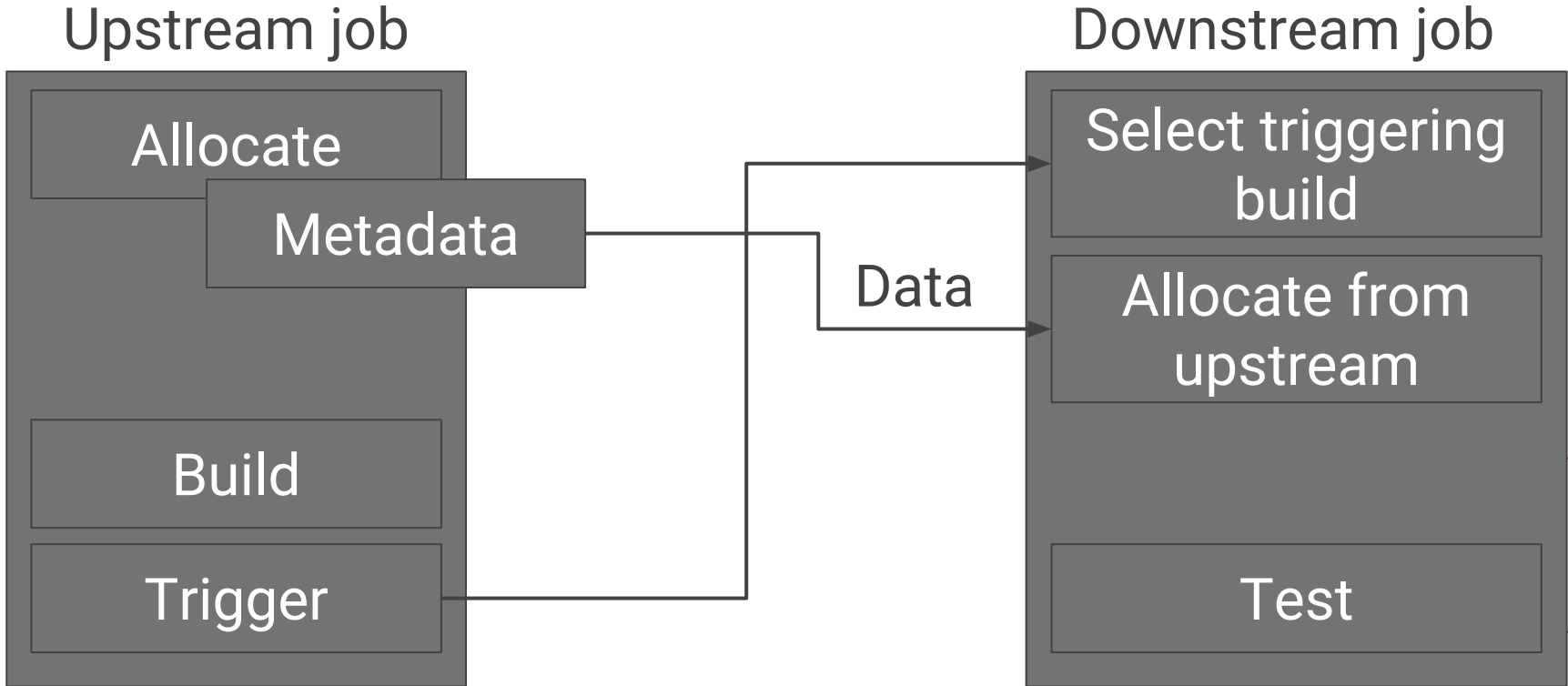
Jenkins World
2016

```
def extWorkspace = exwsAllocate 'diskpool1'
node ('linux') {
    exws (extWorkspace) {
        checkout scm
        sh 'mvn clean install -DskipTests'
    }
}
node ('test') {
    exws (extWorkspace) {
        sh 'mvn test'
    }
}
```

Example 2. Upstream/Downstream



Jenkins World
2016



#JenkinsWorld

Example 2. Upstream job



Jenkins World
2016

- No changes in External Workspace commands!

```
def extWorkspace = exwsAllocate 'diskpool1'
node ('linux') {
    exws (extWorkspace) {
        checkout scm
        sh 'mvn clean install -DskipTests'
    }
}
build job: 'downstream-job',
    parameters: [string(
        name: 'BUILD_NUMBER_PARAM',
        value: "${currentBuild.number}")]
```

Example 2. Downstream job



Jenkins World
2016

- *Run Selector Plugin* picks the upstream build

```
def run = selectRun job: 'upstream-job',
    selector: buildNumber(BUILD_NUMBER_PARAM)
def extWorkspace = exwsAllocate selectedRun: run
node ('test') {
    exws (extWorkspace) {
        sh 'mvn test'
    }
}
```



Demo

Advanced features



Jenkins World
2016

- Workspace cleanup
 - Uses *Workspace Cleanup Plugin*
- Provide custom workspace path
 - By default
`/mountPoint/pathOnDisk/$JOB_NAME/$BUILD_NUMBER`
 - Override
 - Jenkins global config, for each Disk Pool
 - In the Pipeline script

More features



Jenkins World
2016

- Disk Pool restrictions
 - Restrict a Disk Pool to be allocated only for specific jobs
 - Integrates *Job Restrictions Plugin*
- Flexible Disk allocation strategies
 - Select the disk with the most usable space
 - Select the disk with the fastest write/read speed

Demos



Jenkins World
2016

- Jenkins Open Source Hub
 - Thursday 12:45 - 13:00

Stable release



Jenkins World
2016

- Stable version is released!

Filter:

Updates	Available	Installed	Advanced
Install ↓	Name	Version	
<input checked="" type="checkbox"/>	External Workspace Manager Plugin This plugin provides an external workspace management system. It facilitates workspace share and reuse across multiple Jenkins jobs. It eliminates the need to copy, archive or move files.	1.1.0	

Install without restart

Download now and install after restart

Update information obtained: 55 sec ago

Check now

- Usage guidelines on the [plugin's README page](#)
- Feedback is welcome on Jira and Gitter

#JenkinsWorld

Links



Jenkins World
2016

- Repository
github.com/jenkinsci/external-workspace-manager-plugin
- Gitter chat
gitter.im/jenkinsci/external-workspace-manager-plugin



Jenkins World

2016

#JenkinsWorld